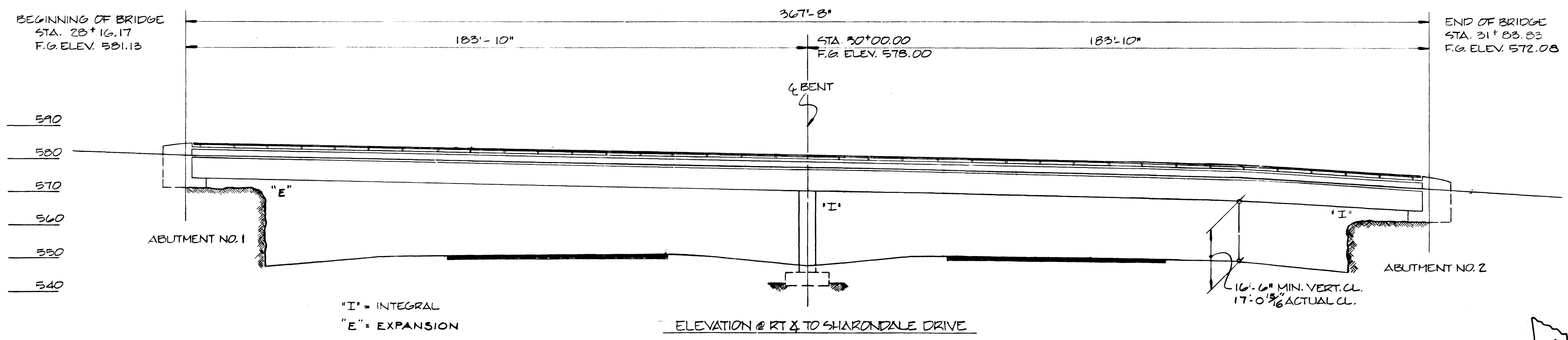


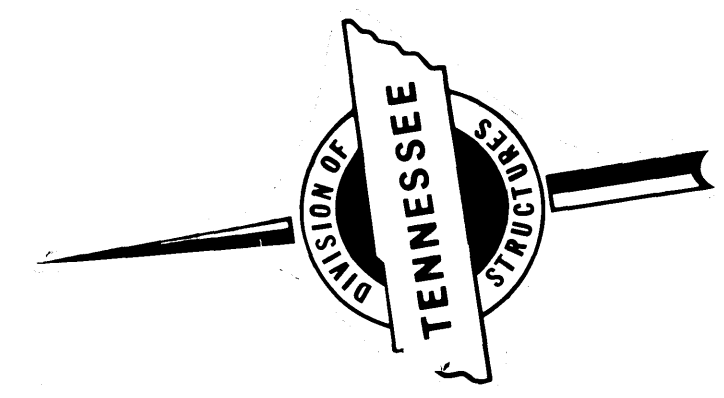
PROJECT NO.	YEAR	SHEET NO.
I-440-453-206	1982	

REVISIONS			
NO.	DATE	BY	BRIEF DESCRIPTION
1		SM	Added Lighting Details & Stations.
2	1-13-82	ELW	Added Sign
3	1-26-82	SM	Added Utilities Location Notes.

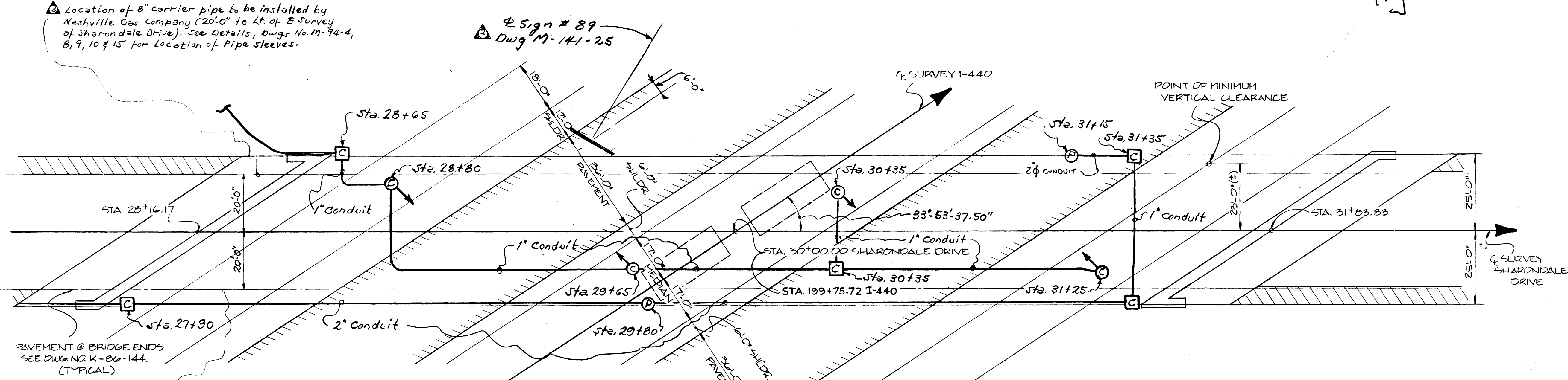


NOTE: ALL EXPOSED SURFACES OF THE ABUTMENT, BENT AND PARAPET INSET SHALL RECEIVE A DECORATIVE FORM FINISH. SEE SURFACE FINISH SKETCH ON DRAWING NO. M-94-2.



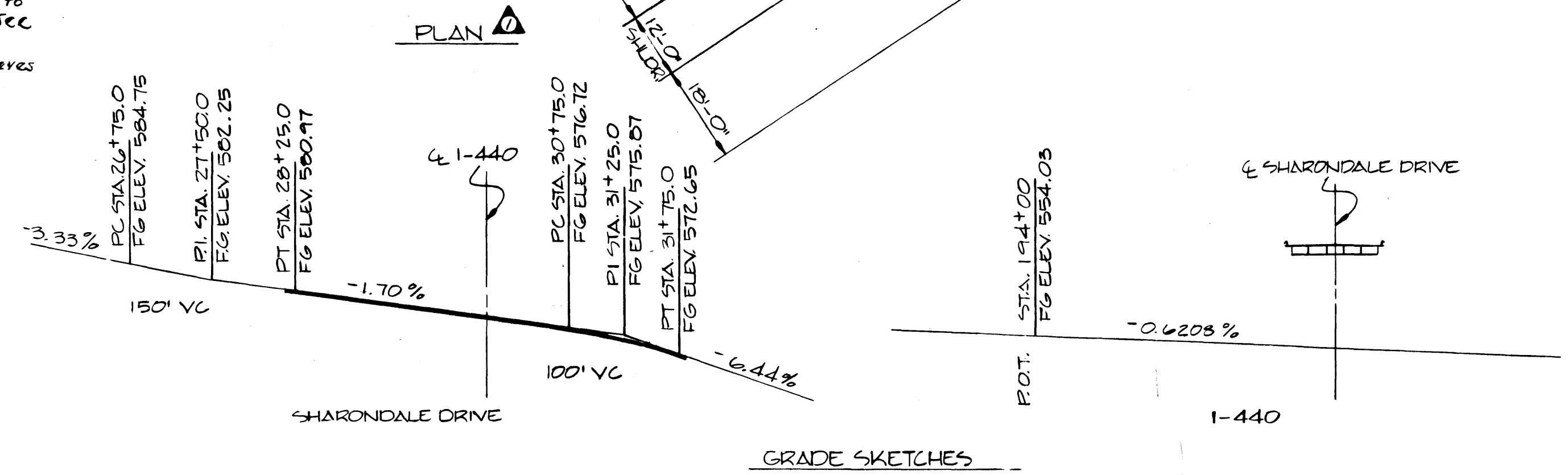
LIST OF DRAWINGS	DWG. NO.	LAST-REV. DATE
LAYOUT	M-94-1	
GENERAL NOTES & EST. QUANTITIES	M-94-2	
FOUNDATION DATA	M-94-3	
SUPERSTRUCTURE	M-94-4	
SUPERSTRUCTURE DETAILS	M-94-5	
SUPERSTRUCTURE DETAILS	M-94-6	
SUPERSTRUCTURE DETAILS	M-94-7	
SUPERSTRUCTURE DETAILS - ABUT. NO. 1	M-94-8	
SUPERSTRUCTURE DETAIL - ABUT. NO. 2	M-94-9	
ABUTMENT NO. 1	M-94-10	
ABUTMENT NO. 1 DETAILS	M-94-11	
ABUTMENT NO. 1 DETAILS	M-94-12	
ABUTMENT NO. 1 DETAILS	M-94-13	
ABUTMENT NO. 2	M-94-14	
BENT	M-94-15	
BILL OF STEEL	M-94-16	
BILL OF STEEL	M-94-17	

Location of 8" carrier pipe to be installed by Nashville Gas Company (20'-0" to Lt. of E Survey of Sharondale Drive). See Details, Dwg. No. M-94-4, 8, 9, 10 & 15 for Location of Pipe Sleeves.



DRAWINGS TO BE PRINTED WITH PLANS	DWG. NO.	LAST REV. DATE
BRIDGE RAILING - CONCRETE PARAPET WITH STRUCTURAL TUNING	K-38-162	11-82
TENN. STD. PRECAST, PRESTRESSED BRIDGE DECK PANELS	M-103-149	
	M-103-150	7-7-82
LIST OF STANDARD DWG'S		LAST REV. DATE
STD. REINF. BAR SUPPORT	K-80-14	8-27-78
MISC. ABUTMENT & DRAINAGE DETAILS	K-85-150	1-9-75
REINF. CONCRETE PAVEMENT AT BRIDGE ENDS	K-86-144	7-17-81
LIGHT STANDARD SUPPORT DETAILS	M-8-149	11-20-75

Location of 6" water line installed in a 14" ID x 3/16" thick carrier pipe (20'-0" to Rt. of E Survey of Sharondale Drive). See Details, Dwg. No. M-94-4, 7, 8, 9, 10 & 15 for location of pipe sleeves. The pipe sleeves to be supplied (or installed) by Utility.



LIST OF SPECIAL PROVISIONS	PROV. NO.	LAST REV. DATE
REGARDING EPOXY COATED REINF. - ORCING STEEL	907A	9-8-81
REGARDING APPROVAL OF SHOP DRAWING	105A	9-8-81

2,001 ADT  
50'-0" ROADWAY W/  
PARAPET & RAILING  
STATE OF TENNESSEE  
**DEPARTMENT OF TRANSPORTATION**  
BUREAU OF HIGHWAYS  
LAYOUT OF BRIDGE No. 9  
SHARONDALE DRIVE  
OVER I-440  
STATION 199+75.72  
DAVIDSON COUNTY  
1982

DESIGNED BY S. UPCHURCH  
DRAWN BY D.F. BRILEY  
SUPERVISED BY J. FIELDS & M. HOLLORAN  
CHECKED BY

DATE 10-81  
DATE 10-81  
DATE

CORRECT  
APPROVED  
DIRECTOR OF HIGHWAYS

M-94-1

MICROFILMED

General Notes

Specifications: Standard Road and Bridge Specifications of the TENNESSEE DEPARTMENT OF TRANSPORTATION (MARCH, 1981 EDITION)

Loading: (HS20-44)

Design: AASHTO 1977 Edition with Addenda

Bridge Deck Forms: Bridge Deck Forms for concrete decks shall be constructed using either removal forms or permanent forms. Permanent forms may be either remain-in-place steel or precast, prestressed concrete panels. In either case forms shall be attached by means other than welding to support members. See Standard Drawing K-80-15A. The contractor shall take steps to assure the stability of the exterior girder against twisting or overturning during slab pouring operations.

Reinforcing Steel: To be ASTM A615 Grade 60. Standard CRSI hook details apply unless otherwise noted on Bill of Steel. Bending dimensions shown are based on Grade 60. Spacing dimensions are center to center unless otherwise noted on drawings. The suffix E, for bars so marked, denotes epoxy coated reinforcement.

CONCRETE: TO BE CLASS "A" FC TO BE 5000 PSI FOR SUPERSTRUCTURE CONCRETE AND 3000 PSI FOR SUBSTRUCTURES AND PARAPETS.

Bridge Rail System: Build parapets according to Standard Drawing K-38-162.

Linseed Oil Protective Treatment: Surfaces receiving Applied Texture Finish (and decks with LSDC or PMC alt.) shall not receive a linseed oil treatment. See Applied Texture Detail, this sheet.

SPECIAL NOTE FOR UTILITIES: IT IS INTENDED THAT THE COST OF MATERIALS AND LABOR NECESSARY FOR THE COMPLETE INSTALLATION OF UTILITIES SHALL BE BORNE BY OTHERS AND SHALL NOT BE PAID FOR AS A PART OF THIS CONTRACT. THE CONTRACTOR SHALL COOPERATE WITH OTHERS IN THE INSTALLATION OF UTILITIES WITH NO ADDITIONAL COMPENSATION ALLOWED THE CONTRACTOR AS A RESULT.

SHOP DRAWINGS: SEE SPECIAL PROVISION NO. 105 A

Special Note - Footing for Bents: After excavation to rock for footing has been completed, holes 6' deep shall be drilled at points designated by the Engineer. From the results obtained, the Engineer shall determine the final footing elevations. No reinforcing steel for bent columns shall be ordered until final footing elevations have been determined.

PILES: To be HP 10X42 driven to refusal on rock or a minimum bearing of 55 tons for Abutment No. 1.

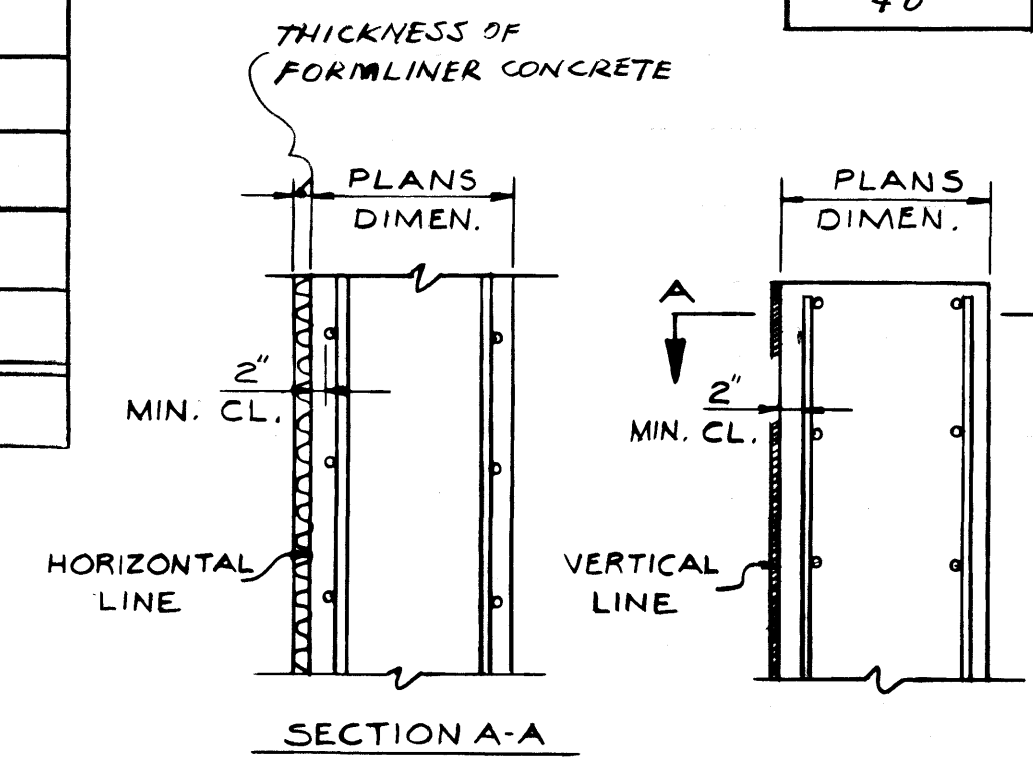
PROJECT NO.	YEAR	SHEET NO.	
I-440-4 (53) 206	1982		
REVISIONS			
NO.	DATE	BY	BRIEF DESCRIPTION
1	4-5-83	SW	Added PILING Item, Quant. & Note.
2		MH	LIGHTING DETAILS
3	10-9-85	SM	Quant. Rev. # Data No. 6

ESTIMATED QUANTITIES (CONT.)

	G06-22.03	G06-32.03	G06-42.03	714-01.09
STEEL PILES (10-INCH) (DRIVING) L.F.				STRUCTURE LIGHTING (BRIDGE No. 9) L.S. (8)
STEEL PILES (10-INCH) (FURNISH DOMESTIC) L.F.				
STEEL PILES (10-INCH) (FURNISH FOREIGN) L.F.				
Abutment No. 1	40	40	40	
	40	40	40	

Estimated Quantities

Item	204-02.01	204-04.01	204-05	G04-03.01	G04-03.02	G04-02.03	G20-14	710-10	710-11	G04-03.03	920-01-11	615-05	908-21.06
Superstructure				1,482.6	92,180	178,929							
Abutment No. 1	547	329	18	195.6	17,475			139	21		96		
Bent No. 1		107	12	136.0	31,612								
Abutment No. 2	112	147	18	43.5	5,449			112	21				
Pay'mt @ Bridge Ends (8)				118.0		32,405							
<b>Total</b>	<b>659</b>	<b>583</b>	<b>48</b>	<b>1,975.7</b>	<b>146,716</b>	<b>211,334</b>	<b>847</b>	<b>251</b>	<b>42</b>	<b>2,361</b>	<b>96</b>	<b>1</b>	<b>6</b>



TYPICAL FORMING DETAILS

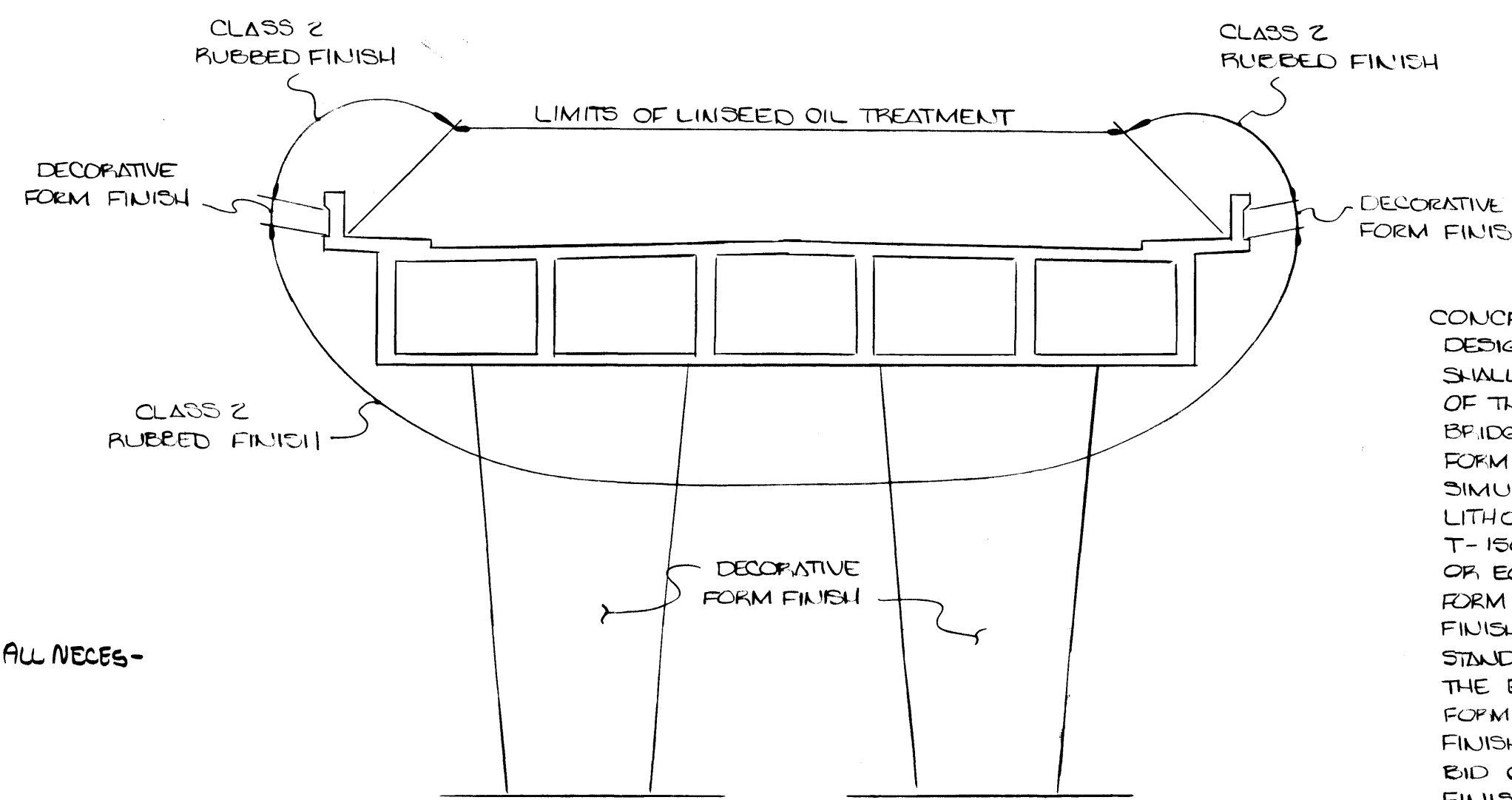
NOTE: THESE DETAILS ARE TYPICAL FOR ALL STRUCTURAL ELEMENTS REQUIRING DECORATIVE FORM LINERS EXCEPT CONCRETE PARAPETS. PARAPET DIMENSIONS MAY BE REDUCED BY THE THICKNESS OF THE FORM LINERS IN ORDER TO UTILIZE STANDARD PARAPET FORMS. REINFORCING BAR BENDING DIMENSIONS SHALL BE REDUCED ACCORDINGLY.

CONCRETE FINISHES: PORTIONS OF THE BRIDGE SURFACE DESIGNATED TO RECEIVE A CLASS 2 "RUBBED FINISH" SHALL BE FINISHED ACCORDING TO SUBSECTION G04-22 OF THE STANDARD SPECIFICATIONS. PORTIONS OF THE BRIDGE SURFACE DESIGNATED TO RECEIVE A DECORATIVE FORM FINISH SHALL BE FORMED USING A FORMLINER, SIMILAR TO BURKE FORMLINER, B6308 CONCRETE HARP, LITHOTEX FORMLINER, FRACTURED FINISH GROOVED T-150, SYMBOLS 3/4" NARROW FRACTURED FIN P/C 30909-9 OR EQUAL. AFTER STRIPPING FORMLINER, THE DECORATIVE FORM FINISHED AREAS SHALL RECEIVE A CLASS 1, ORDINARY FINISH IN ACCORDANCE WITH SUBSECTION G04-23 OF THE STANDARD SPECIFICATIONS. THE CONTRACTOR SHALL SUBMIT TO THE ENGINEER FOR APPROVAL A SAMPLE CASTING USING THE FORMLINER TO BE FURNISHED. THE COST OF ALL CONCRETE FINISHES SHALL BE INCLUDED IN THE UNIT PRICE OF ITEMS BID ON. SURFACES RECEIVING A DECORATIVE OR CLASS 2 FINISH SHALL NOT RECEIVE A LINSEED OIL TREATMENT. SEE SURFACE FINISH SKETCH THIS SHEET.

- ① Excavation based on lower road profile.
- ③ The cost of bituminous fiberboard, and all miscellaneous joint material to be included in bridge items bid on.
- ④ The cost of polyethylene sheeting and all miscellaneous items necessary for installation to be included in cost of perforated C.M. Pipe.
- ⑤ All reinforcing steel in the traffic face of parapets shall be epoxy coated. Cost to be included in the price bid for item G20-10.
- ⑥ PAVEMENT AT BRIDGE END QUANTITIES ARE INCLUDED AS AN ITEM IN QUANTITY BOX UNDER ABUTMENT NO. 2 AND LISTED AS "PAY'MT @ BRIDGE ENDS".
- ⑦ ACCEPTABLE EXPANSION DEVICES INCLUDE: A) ON FLEX 25 BY ACCESSORIES, INC. B) AS 200 BY ACME HIGHWAY PRODUCTS, INC. C) W/BO-MAURER SB200 BY WATSON BOWMAN ASSOCIATES, INC. OR EQUAL. TOTAL REQUIRED MOVEMENT 2".
- ⑧ BEARING DEVICES SHALL BE IN ACCORDANCE WITH THE DETAILS AND DIMENSIONS SHOWN ON DRAWING M-94-11. THE CONTRACTOR MAY ALSO SUBMIT ALTERNATE DETAILS FOR APPROVAL.

BEARING	TOTAL MOVEMENT	DEAD LOAD REACTION	LIVE LOAD REACTION
ABUT. NO. 1	2"	256 KIPS	54 KIPS

⑧ Lump Sum for STRUCTURAL LIGHTING INCLUDES 405 FT. OF 1" φ CONDUIT WITH PULL WIRES, 435 FT. OF 2" φ CONDUIT WITH PULL WIRES, 9 PULL BOXES, 8 ANCHOR BOLTS AND ALL NECESSARY MATERIALS FOR INSTALLATION OF STRUCTURE LIGHTING.



SURFACE FINISH SKETCH

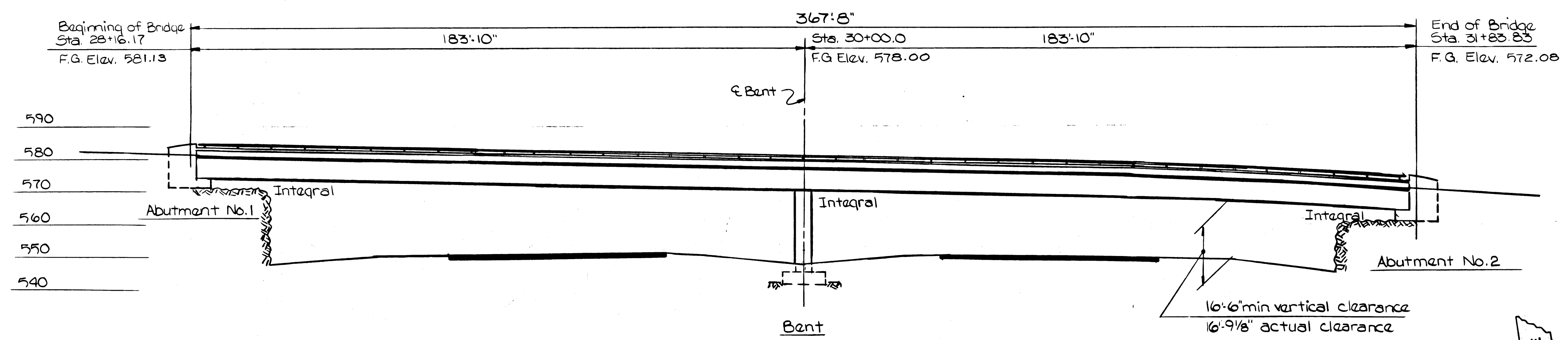
DESIGNED BY S. Upchurch DATE 10-81  
 DRAWN BY R. F. Bible DATE 10-81  
 SUPERVISED BY J. Fields DATE 10-81  
 CHECKED BY DATE

CORRECT *Charles L. Foy*  
 ENGINEER OF STRUCTURES  
 APPROVED *David G. Evans*  
 DIRECTOR OF HIGHWAYS

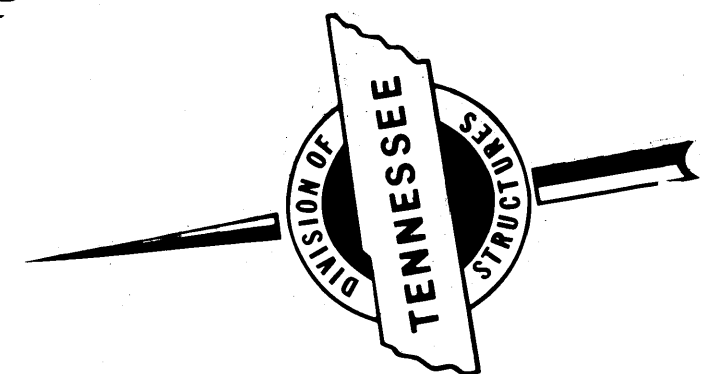
MICROFILMED



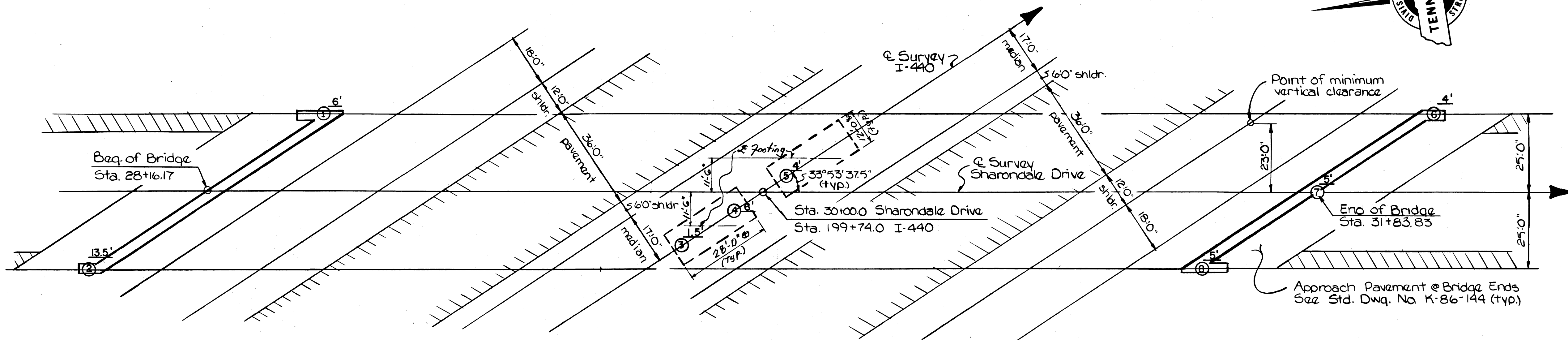
PROJECT NO.	YEAR	SHEET NO.	
I-440-4(SB) 2010	1982		
REVISIONS			
NO.	DATE	BY	BRIEF DESCRIPTION



Elevation @ Right Angles to Sharondale Drive

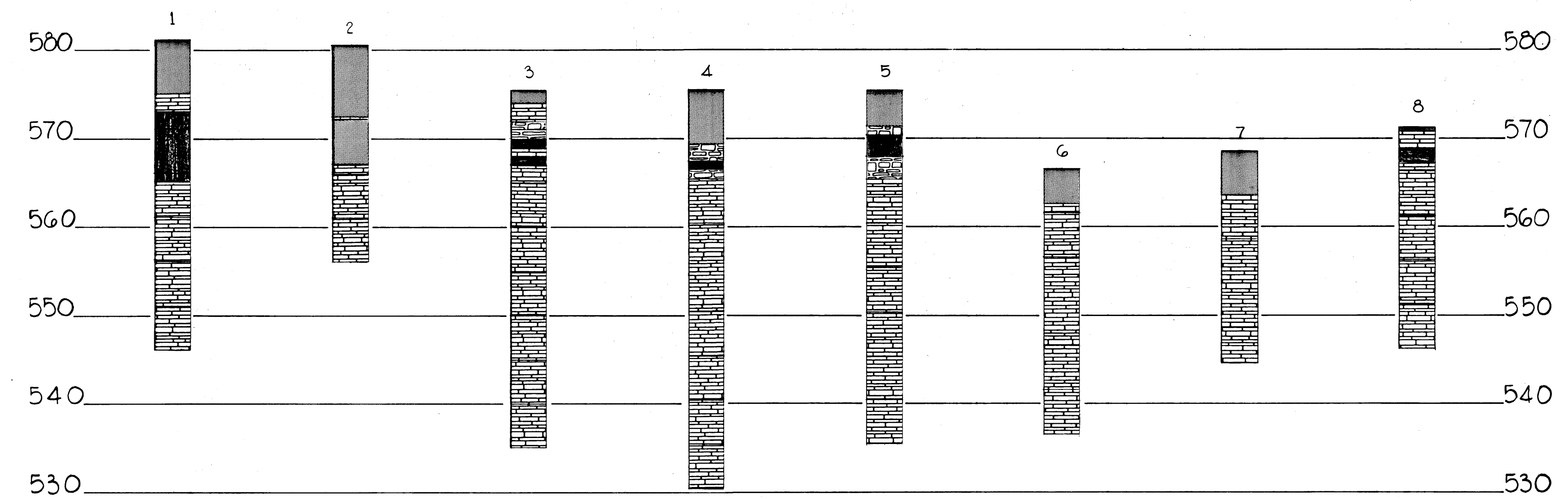


Required: (1) Approximate existing ground line and rock line.  
 (2) Sufficient ground, rock, and coring information for bridge foundations.



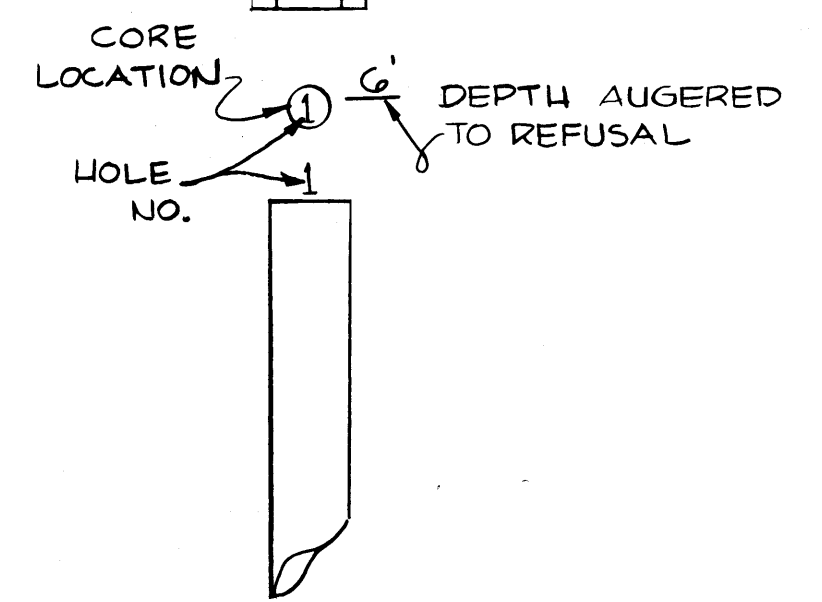
Plan

NOTE: CORE SAMPLES TAKEN AT ALL BORING LOCATIONS



-Legend-

- SILTY CLAY
- CAVITY
- WEAT. LIMESTONE
- LIMESTONE (10 TONS/FT.²)



- 1. G. 581.22  
R. 575.22
- 2. G. 581.60  
R. 568.13
- 3. G. 575.6  
R. 574.1
- 4. G. 575.5  
R. 569.5
- 5. G. 575.5  
R. 571.5
- 6. G. 566.63  
R. 562.63
- 7. G. 568.76  
R. 563.76
- 8. G. 571.22  
R. 570.72

STATE OF TENNESSEE  
 DEPARTMENT OF TRANSPORTATION  
 BUREAU OF HIGHWAYS  
 Foundation Data  
 Sharondale Drive over I-440  
 Station 199+74.0  
 Davidson County  
 1982

DESIGNED BY Stan Upchurch DATE 6-81  
 DRAWN BY Rhonda Bible DATE 6-81  
 SUPERVISED BY Fields DATE 6-81  
 CHECKED BY DATE

CORRECT *Colleen L. Lovance*  
 ENGINEER OF STRUCTURES  
 APPROVED *Louis Evans*  
 DIRECTOR OF HIGHWAYS

MICROFILMED

















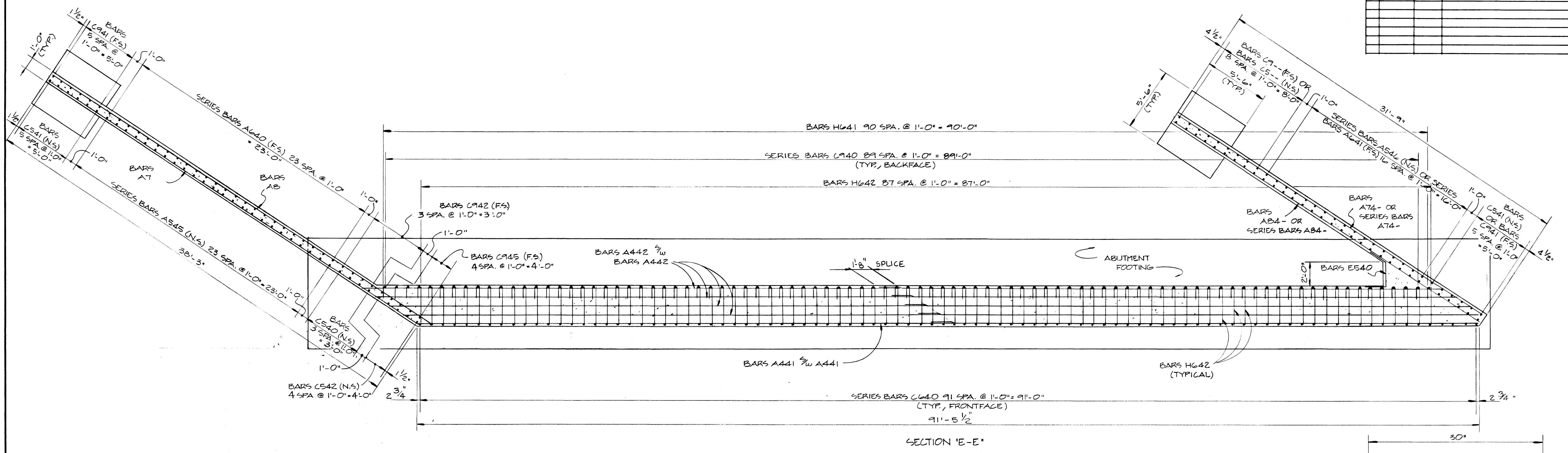




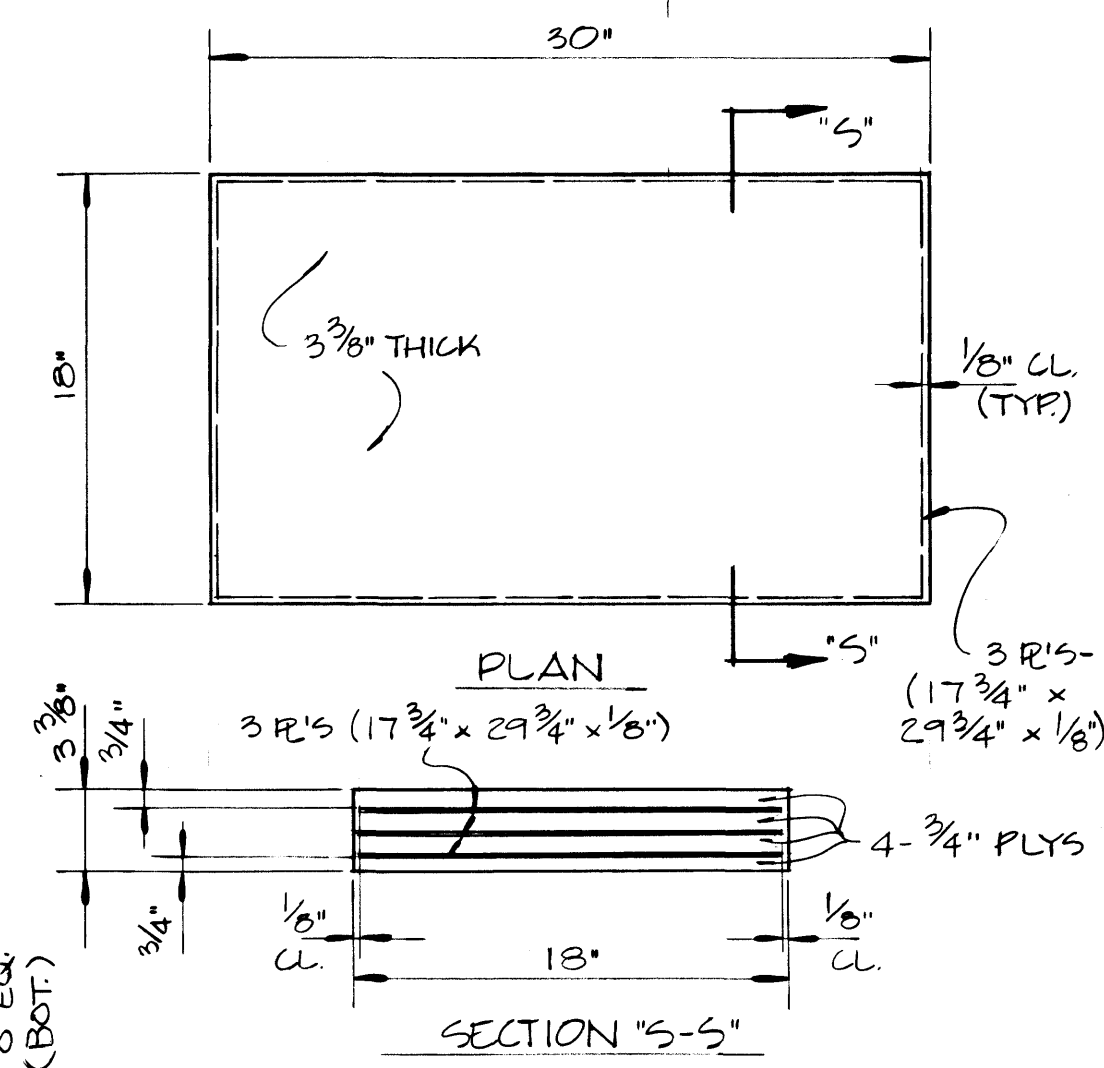
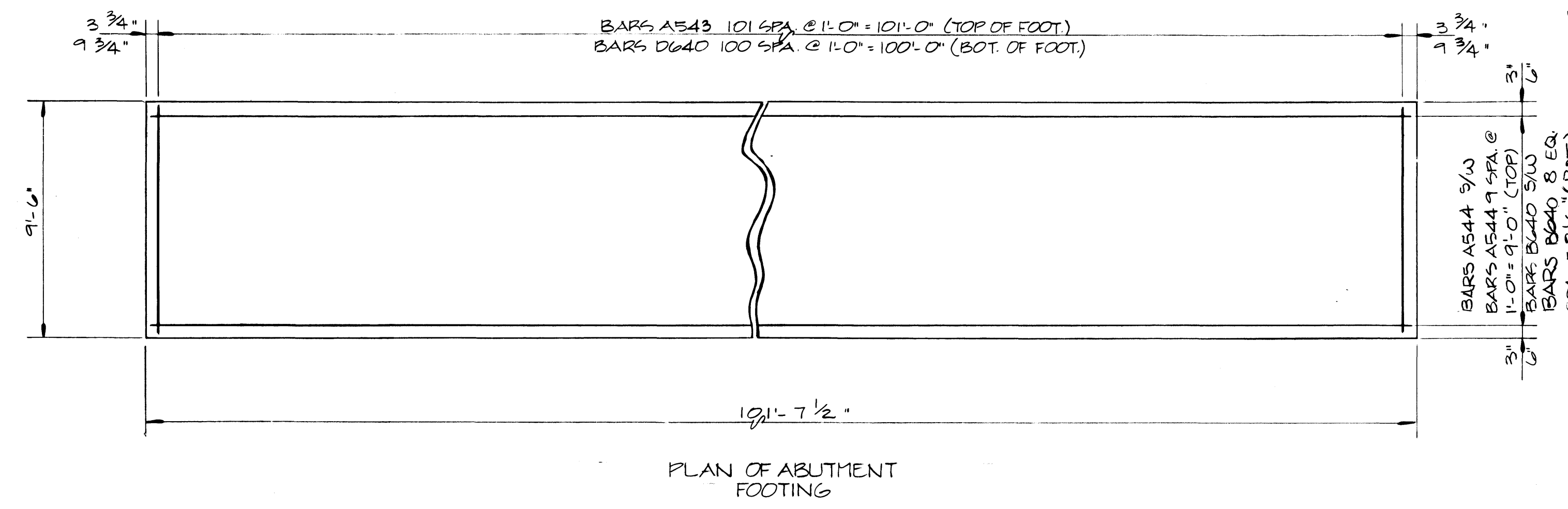
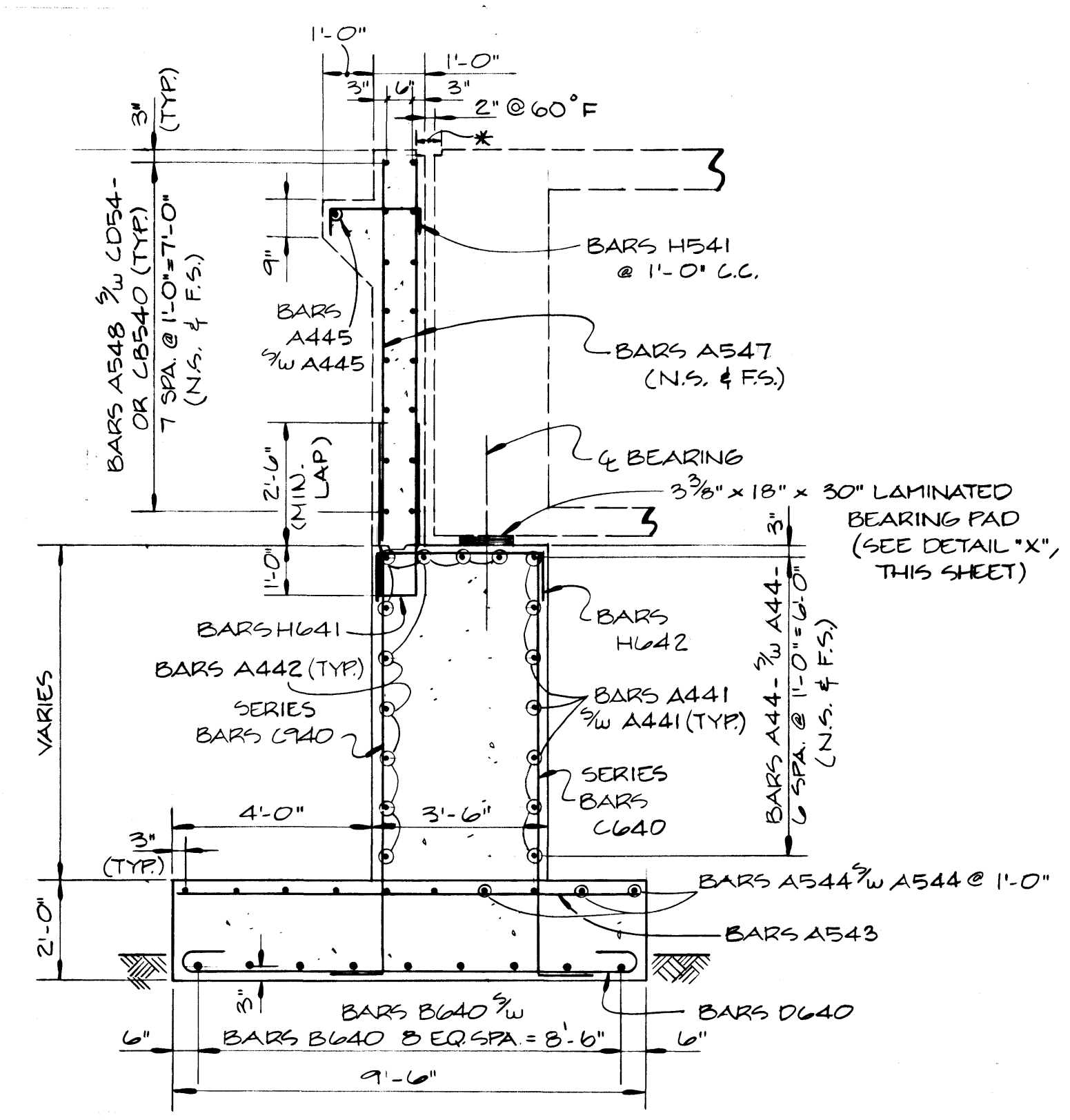


PROJECT NO.	YEAR	SHEET NO.
I-440-4 (58206)	1982	

REVISIONS			
NO.	DATE	BY	BRIEF DESCRIPTION



N.S. DENOTES NEAR SIDE.  
F.S. DENOTES FAR SIDE.



STATE OF TENNESSEE  
DEPARTMENT OF TRANSPORTATION  
BUREAU OF HIGHWAYS

ABUTMENT NO. 1 DETAILS  
SHARONDALE DRIVE OVER  
INTERSTATE 440  
STATION 199 + 75.72  
DAVIDSON COUNTY  
1982

DESIGNED BY S. UPCHURCH  
DRAWN BY DONNA BRILEY  
SUPERVISED BY FIELDS & HOLLORAN  
CHECKED BY

DATE FEB '82  
DATE  
DATE

\* DIMENSION TO BE DETERMINED BY THE SUPPLIER OF EXPANSION JOINT.

CORRECT *Edellon L. Lewis*  
ENGINEER OF STRUCTURES

APPROVED *Lewis J. Evans*  
DIRECTOR OF HIGHWAYS

MICROFILMED

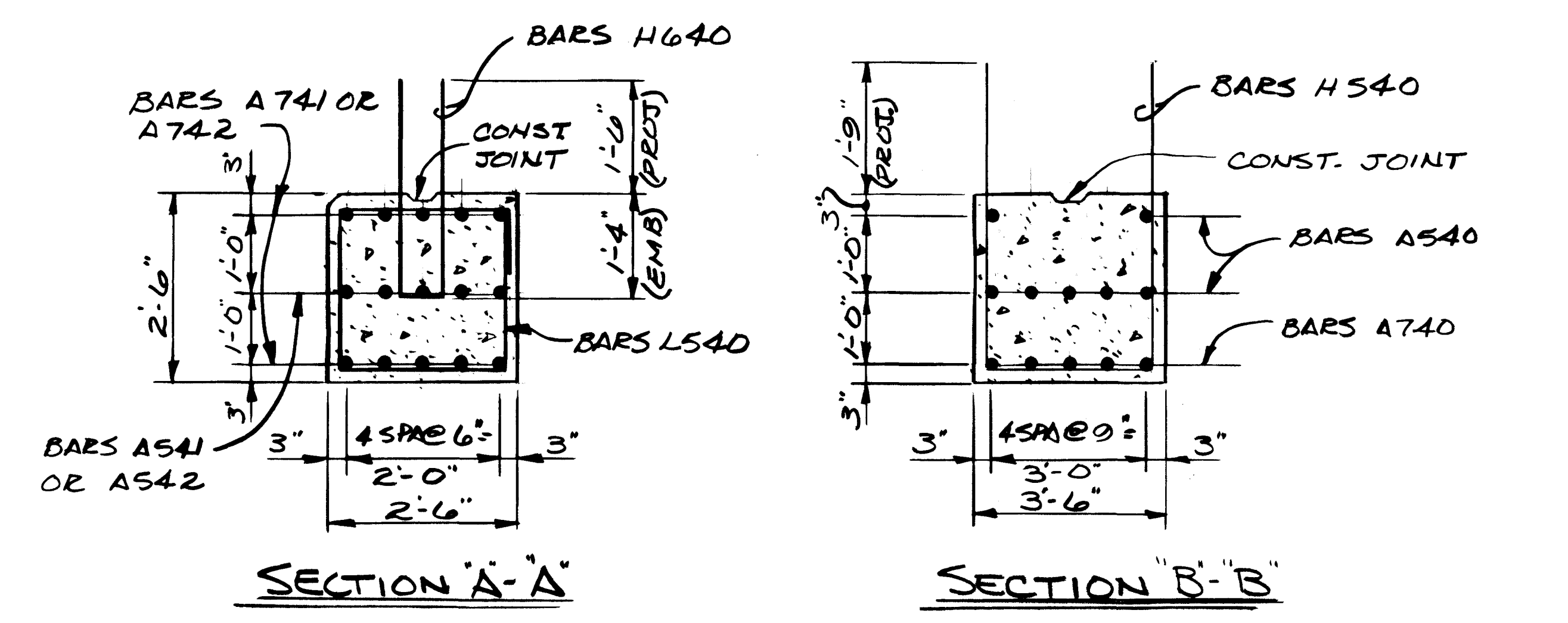
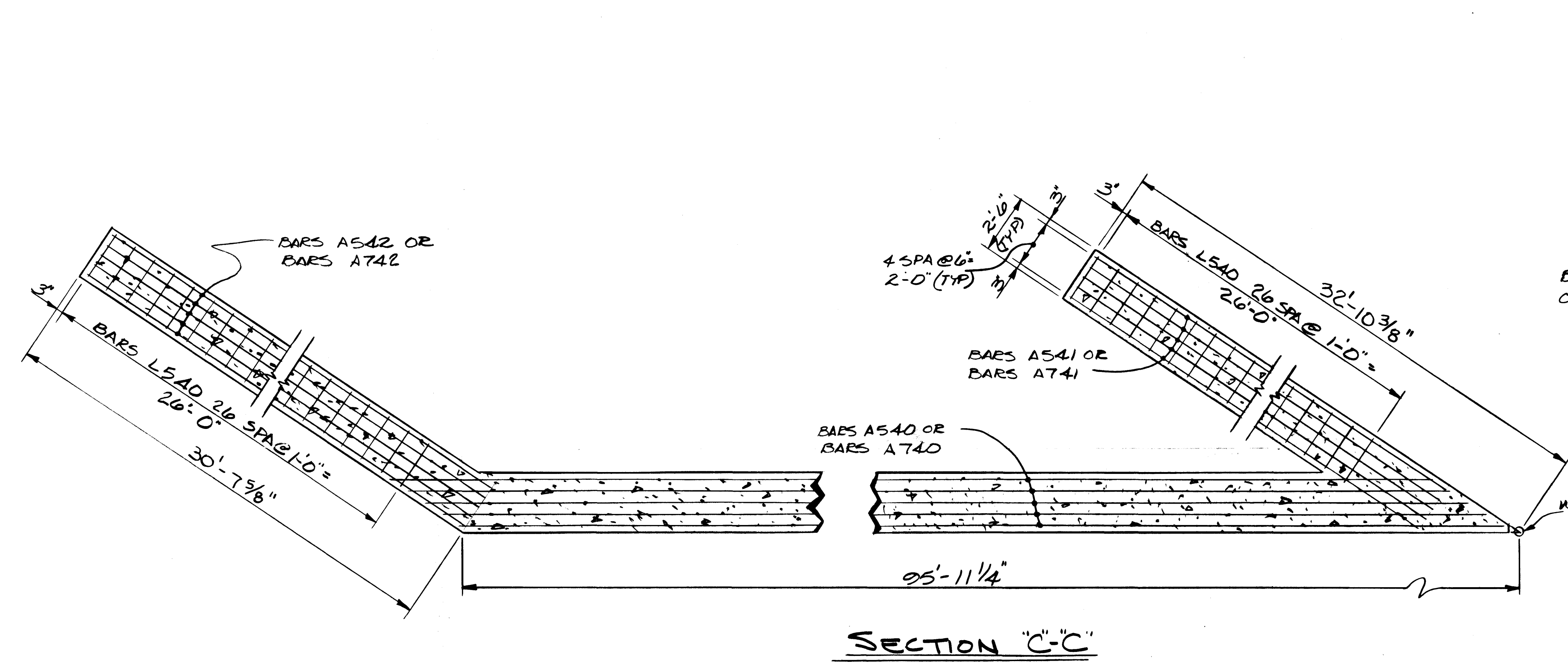
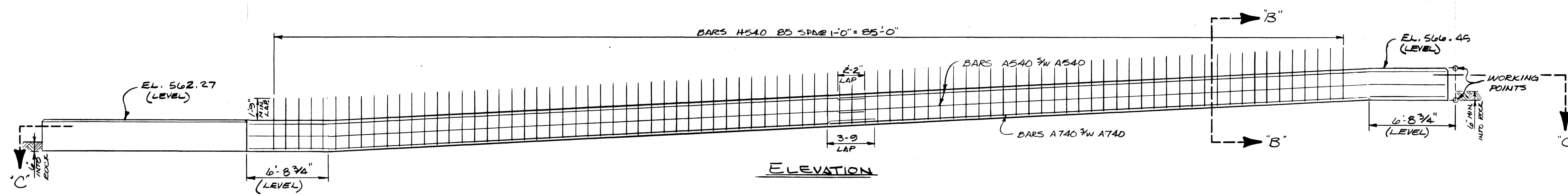
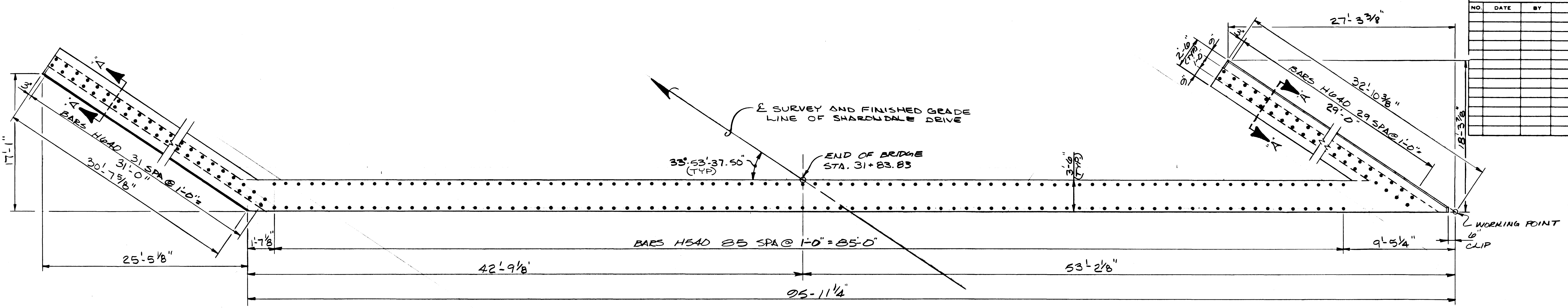






PROJECT NO.	YEAR	SHEET NO.
I-440-4(53)200	1982	

REVISIONS			
NO.	DATE	BY	BRIEF DESCRIPTION



NOTE:  
COST OF BRIDGE RAIL AND POST IS TO BE INCLUDED IN THE COST OF BRIDGE RAIL SYSTEM.

ESTIMATED QUANTITIES

ITEM	REINFORCING STEEL LBS.	CONCRETE CLASS "A" (CY.)
ABUTMENT No. 2	5,449	43.5

STATE OF TENNESSEE  
DEPARTMENT OF TRANSPORTATION  
BUREAU OF HIGHWAYS  
ABUTMENT No. 2  
SHARDONALE DRIVE OVER  
INTERSTATE I-440  
STATION 199+75.72  
DAVIDSON COUNTY  
1982

DESIGNED BY STAN UPCURCH DATE 10-26-81  
DRAWN BY KENNY FRANKENFELD DATE 10-26-81  
SUPERVISED BY SIM FIELDS DATE 10-26-81  
CHECKED BY \_\_\_\_\_ DATE \_\_\_\_\_

CORRECT *Clifton L. Lora*  
ENGINEER OF STRUCTURES  
APPROVED *Louis Guano*  
DIRECTOR OF HIGHWAYS

MICROFILMED











BILL OF STEEL

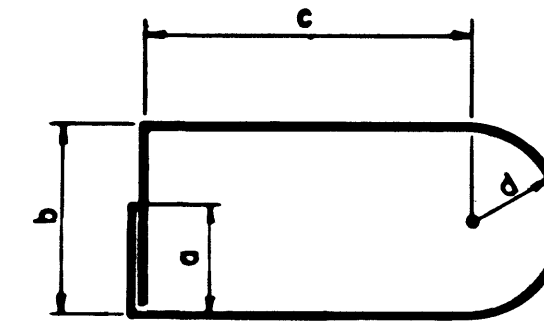
CONST. NO. 10014-3111-44

FOR ROAD DIST. NO.	STATE	FED. AID PROJ. NO.	FISCAL YEAR	SHEET NO.	TOTAL SHEETS
3	TENN.	I-440-4(5)206	1982		

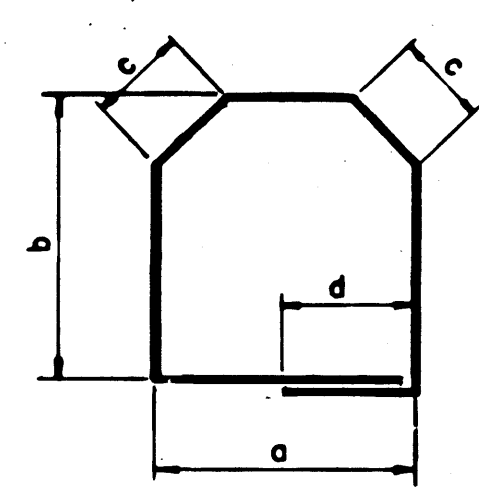
  

REVISIONS			
NO.	DATE	BY	BRIEF DESCRIPTION

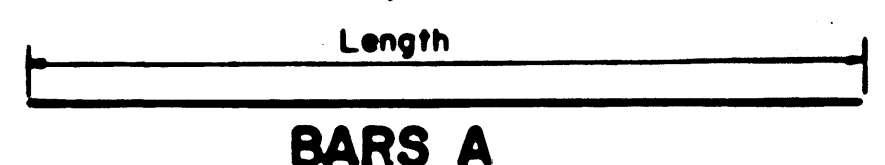
ABUTMENT NO. 1 (CONT.)										ABUTMENT NO. 1 (CONT.)										BENT										PAVEMENT @ BRIDGE ENDS - ABUT. NO. 1 & 2 (EPOXY)																		
BAR	LOCATION	SIZE	NO. REQ'D	BENDING DIMENSIONS				LENGTH	BAR	LOCATION	SIZE	NO. REQ'D	BENDING DIMENSIONS				LENGTH	BAR	LOCATION	SIZE	NO. REQ'D	BENDING DIMENSIONS				LENGTH	BAR	LOCATION	SIZE	NO. REQ'D	BENDING DIMENSIONS				LENGTH													
				a	b	c	d						a	b	c	d					a	b	c	d					a	b	c	d																
SER.									D640	ABUT. FOOTING	6	101	9'-0"					10'-4"	A150	COLUMNS	11	112					28'-0"	A190E	SLAB	4	200					45'-6"												
A842	R. WING	8	1	BARS VARY 8'-9" TO 22'-0" IN INC. OF 2'-13/8" (12 BARS)				24'-6"	D641	WING FOOTING	6	44	5'-0"						6'-4"	C1150	COL. & FOOTINGS	11	112	12'-8"				14'-7"	A610E	SLAB & CURB	6	124					24'-2"											
A843	L. WING	8	3					31'-5"	E840	A. WALL & BACKWALL	5	9	2'-2"	1'-6"	10"	1'-0"		5'-1"	D650	FOOTINGS	6	74	11'-6"				12'-10"	A790E	FOOTING & SLAB	7	32					46'-7"												
SER.																			D651	FOOTINGS	6	46	18'-6"				19'-10"	A990E	SLAB	9	99					24'-2"												
A844	L. WING	8	1	BARS VARY 9'-8" TO 24'-1" IN INC. OF 1'-9 5/8" (9 BARS)				151'-10"	H541	BACKWALL	5	86	1'-8"	5"				2'-5"	SER.																													
A845	L. WING	8	2					28'-5"	H641	A. WALL	6	91	9"	3'-9"				8'-2"	L550	COLUMNS	5	2	DIM. 'A' VARIES 7'-2 3/8" TO 11'-9 3/8" IN INC. OF 2 3/8" (24 BARS)				606'-6"	H690E	SLAB & CURB	6	100	7'-8 1/4"	1'-2"			9'-11"												
A940	R. WING	9	2					27'-3"	H642	A. WALL	6	88	3'-2"	1'-0"				5'-1"	SER.																													
A941	L. WING	9	2					20'-9"											SER.																													
									= ABUTMENT NO. 2 =																																							
B640	ABUT. FOOTING	6	18	52'-0"				52'-8"	A540	A. BEAM	5	14						48'-11"																														
C540	R. WING	5	4	16'-10"				17'-8"	A541	WINGS	5	5						28'-8"																														
C541	L. & R. WING	5	12	4'-11"				5'-8"	A542	WINGS	5	5						30'-3"																														
C542	R. WING	5	5	15'-11"				16'-9"																																								
C543	L. WING	5	6	15'-3"				16'-11"	A740	A. BEAM	7	10						49'-8"																														
C544	L. WING	5	3	14'-6"				15'-4"	A741	WING	7	10						28'-8"																														
									A742	WING	7	10						30'-3"																														
SER.									H540	A. BEAM	5	86	8'-2"	4'-6"				12'-2"																														
C640	A. WALL	6	1	DIM. 'A' VARIES 8'-2" TO 6'-9" IN INC. OF 0'-0 3/8" (92 BARS)				686'-2"	H640	WINGS	6	62	8"	2'-10"				6'-3"																														
SER.									L540	WINGS	5	54	2'-2"	1'-0"	2'-2"			9'-6"																														
C940	A. WALL	9	1	DIM. 'A' VARIES 8'-13 3/4" TO 6'-9" IN INC. OF 0'-0 3/8" (90 BARS)				670'-4"																																								
C941	L & R. WINGS	9	12	4'-11"				6'-5"																																								
C942	R. WING	9	4	16'-10"				18'-4"																																								
C943	L. WING	9	6	15'-3"				16'-9"																																								
C944	L. WING	9	3	14'-6"				16'-0"																																								
C945	R. WING	9	5	15'-11"				17'-5"																																								
C8540	BACKWALL	5	8	17'-9"	2'-0"	1'-8"		19'-9"																																								
C8540	BACKWALL	5	8	18'-10"	2'-0"	1'-8"		20'-10"																																								
C8541	BACKWALL	5	8	13'-4"	2'-0"	1'-11 1/2"		15'-4"																																								
C8542	BACKWALL	5	8	16'-6"	2'-0"	1'-8"		18'-6"																																								



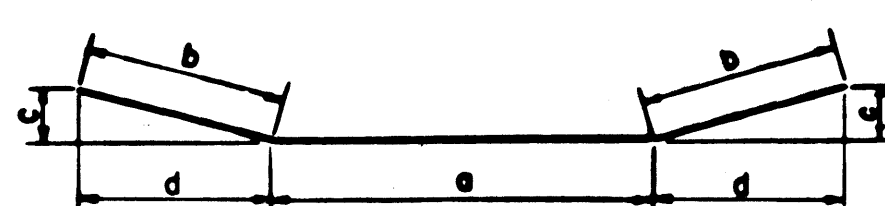
BARS X



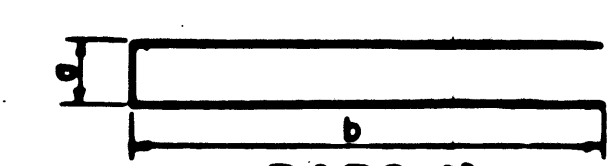
BARS M



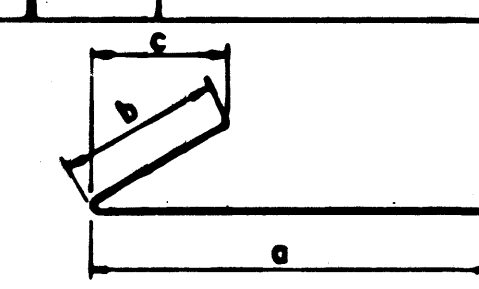
BARS A



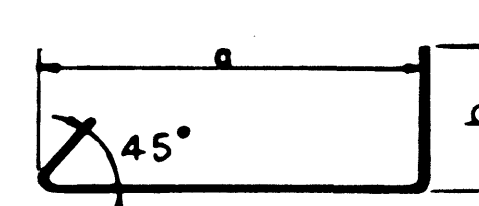
BARS E



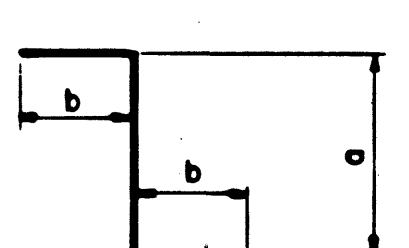
BARS H



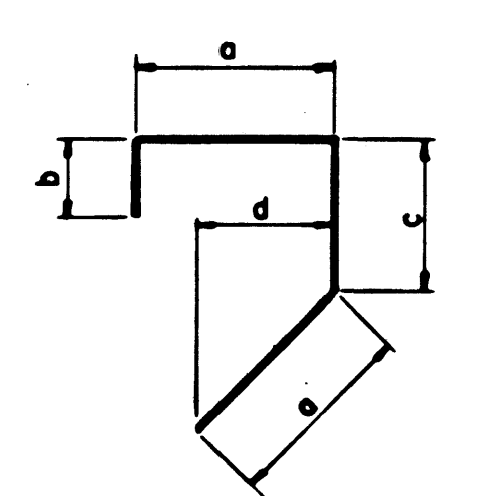
BARS CB



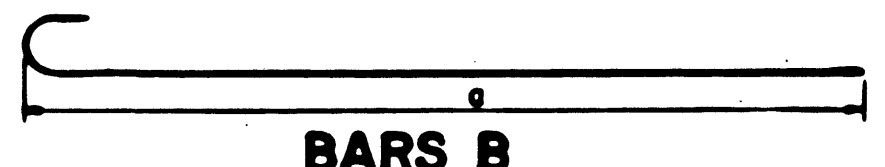
BARS YB



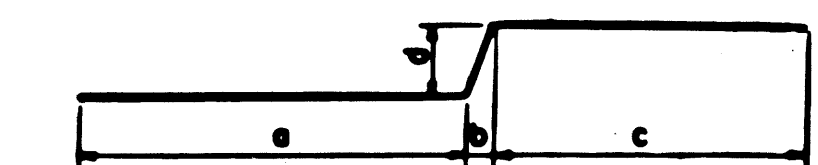
BARS Z



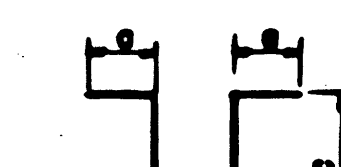
BARS J



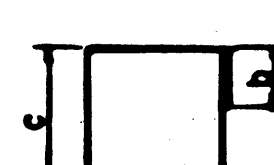
BARS B



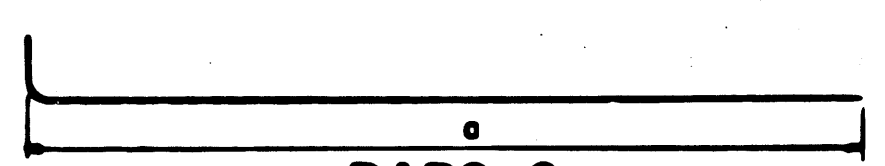
BARS F



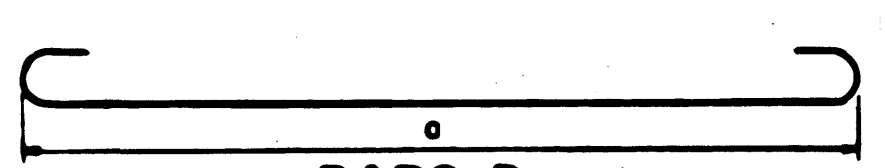
BARS K



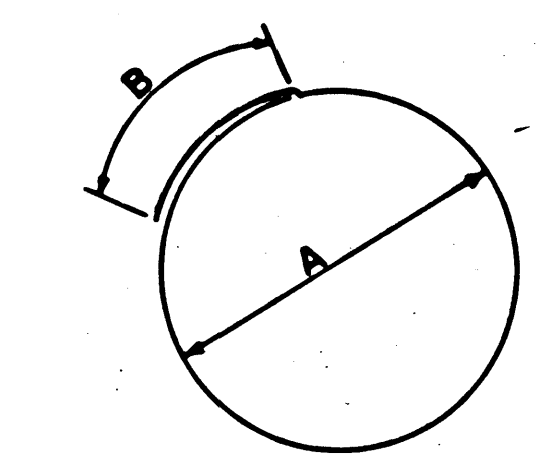
BARS L



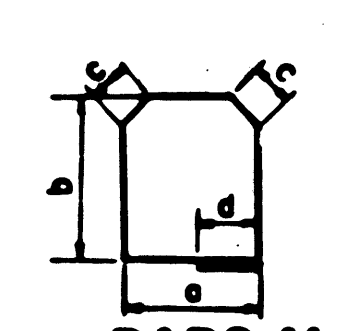
BARS C



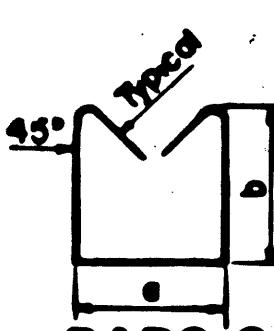
BARS D



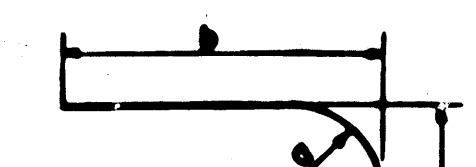
BARS T



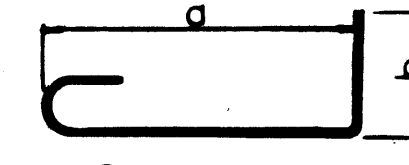
BARS M



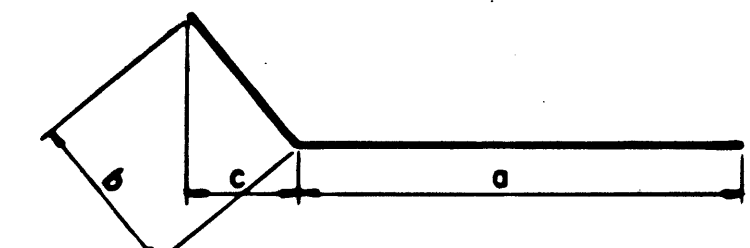
BARS S



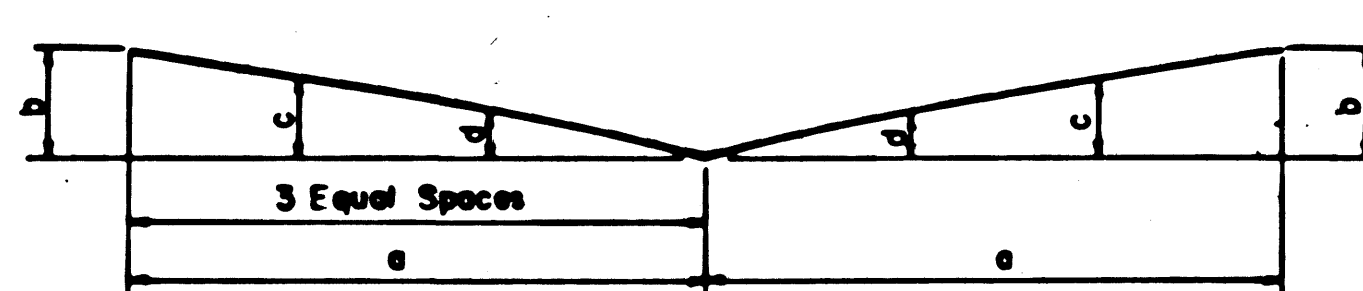
BARS R



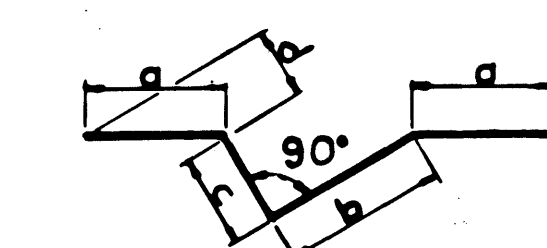
BARS YA



BARS CD



BARS V



BARS JX

REINFORCING STEEL CODE

TYPE	SIZE	SERIES
A	5	06

NOTE: Dimensions shown on this sheet are outside to outside of bar. Standard C R S I. Hook Details Shall Apply, Except As Noted.

STATE OF TENNESSEE  
DEPARTMENT OF TRANSPORTATION  
BUREAU OF HIGHWAYS

BILL OF STEEL

SHARONDALE DRIVE OVER  
INTERSTATE - 440  
STATION 199 + 75.72  
DAVIDSON COUNTY  
1982

CORRECT *William L. Luvall*  
ENGINEER OF STRUCTURES  
APPROVED *Francis Evans*  
DIRECTOR OF HIGHWAYS

MICROFILMED

DESIGNED BY S. URBACH DATE 3-82  
DRAWN BY A. MOODY DATE 3-82  
SUPERVISED BY J. FIELDS & M. HOLLOMAN DATE 3-82  
CHECKED BY \_\_\_\_\_ DATE \_\_\_\_\_